

# Majestic Court

— PIRAEUS —











## Majestic Court – Piraeus







## Cosmopolitan Living

Piraeus, the historic port city of Athens, serves as the bustling gateway between the capital of Greece and the stunning Aegean Sea. Just a short drive from the heart of Athens, Piraeus is renowned for its strategic maritime significance, vibrant urban landscape, and rich cultural heritage. Majestic Court is a new and modern addition to Piraeus, embodying contemporary design and personalized style. As a resident of Majestic Court, you'll enjoy all the advantages of living in a dynamic locale that seamlessly blends the historical grandeur of ancient Greece with the conveniences of contemporary city life.





where  
history  
meets  
modernity

## Cultural Excellence

Living in Piraeus offers an unparalleled blend of urban sophistication and coastal charm. Majestic Court is located just a 10-minute drive from the enchanting Pasalimani, nestled at the heart of Piraeus – Athens' vibrant hub where history meets modernity. Imagine leisurely walks along the stunning marina, savoring gourmet meals at waterfront restaurants, and shopping at chic boutiques and lively markets—all within your reach. Excellent public transport links, including metro, buses, and ferry services, provide seamless connectivity to Athens and the picturesque Greek islands, ensuring your commute is effortless.







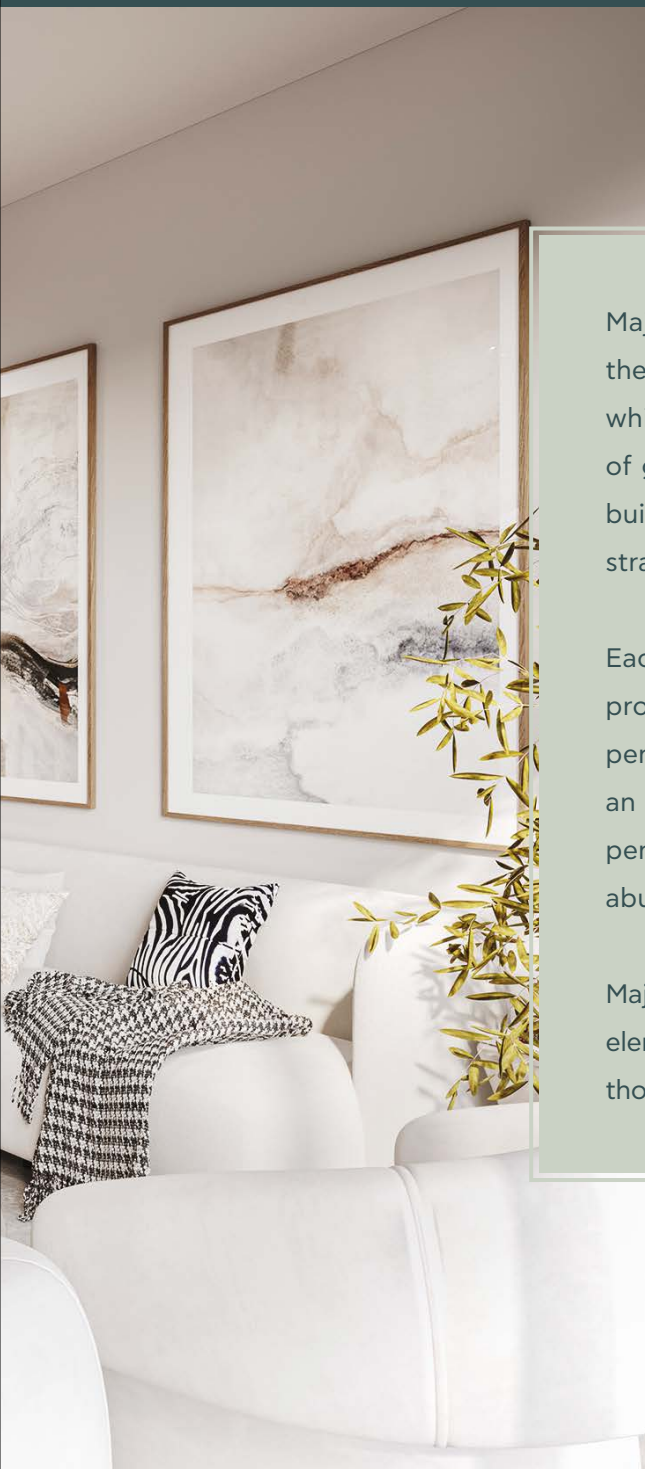


## Elevated Modernity

Majestic Court embodies the ideal balance between harmonious city living and modern design that focuses on comfort. The building's exterior exudes sophistication with its sleek lines and minimalist aesthetic, setting it apart from its surroundings – each element has been crafted to create a harmonious blend of form and function, ensuring that Majestic Court is not only visually stunning but also exceptionally practical.

The building features balconies on every level, offering residents their own private outdoor spaces to enjoy the Mediterranean climate that Greece so generously offers throughout the entire year. Large, floor-to-ceiling windows enhance the sense of openness, flooding the interiors with natural light and creating a seamless connection between indoor and outdoor living spaces.





Majestic Court's use of high-quality materials and finishes throughout the exterior that underscore its contemporary appeal. The clean, white facade can be perfectly complemented by tasteful accents of greenery, adding a touch of nature to an urban environment. The building's modern architectural style is further highlighted by the strategic use of glass and metal, giving it a timeless elegance.

Each floor from the 1st to the 5th hosts a single 2 Bedroom apartment, providing unparalleled privacy and spaciousness for its residents. The penthouse, a two-bedroom duplex on the 6th and 7th floors, offers an elevated living experience with its unique layout. Residents of the penthouse will enjoy a luxurious retreat with breathtaking views and abundant natural light, enhancing the overall sense of grandeur.

Majestic Court's luxurious exterior, combined with contemporary design elements and spacious living areas, makes it an exceptional choice for those seeking a high-quality, stylish, and comfortable living experience.

sleek lines  
and minimalist  
aesthetic









## Sophisticated Elegance

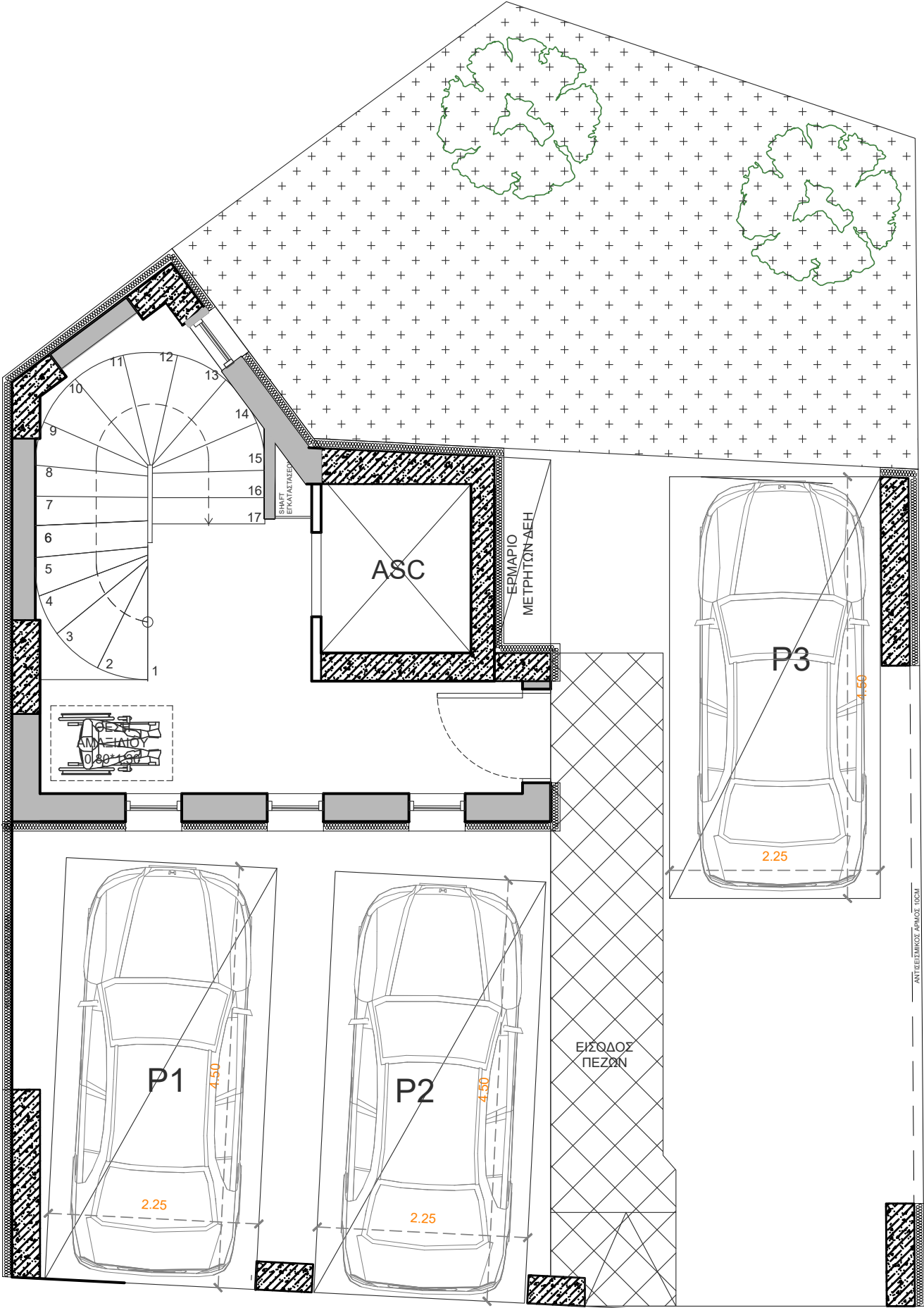
The interiors of Majestic Court showcase a focus on modern amenity, designed with both style and functionality in mind. Each apartment boasts spacious living areas, featuring top-quality materials and finishes. The kitchens are equipped with state-of-the-art appliances and countertops, making them a dream, while the living and dining rooms are designed for comfort and sophistication, with open layouts that enhance the sense of space and light.

The two-bedroom duplex penthouse on the 6th and 7th floors offers an excellent living experience, with expansive rooms that feel premium. This luxurious space includes private terraces on both levels with stunning views, perfect for relaxation and entertaining. Residents will also appreciate the convenience of dedicated parking spots, ensuring hassle-free access.

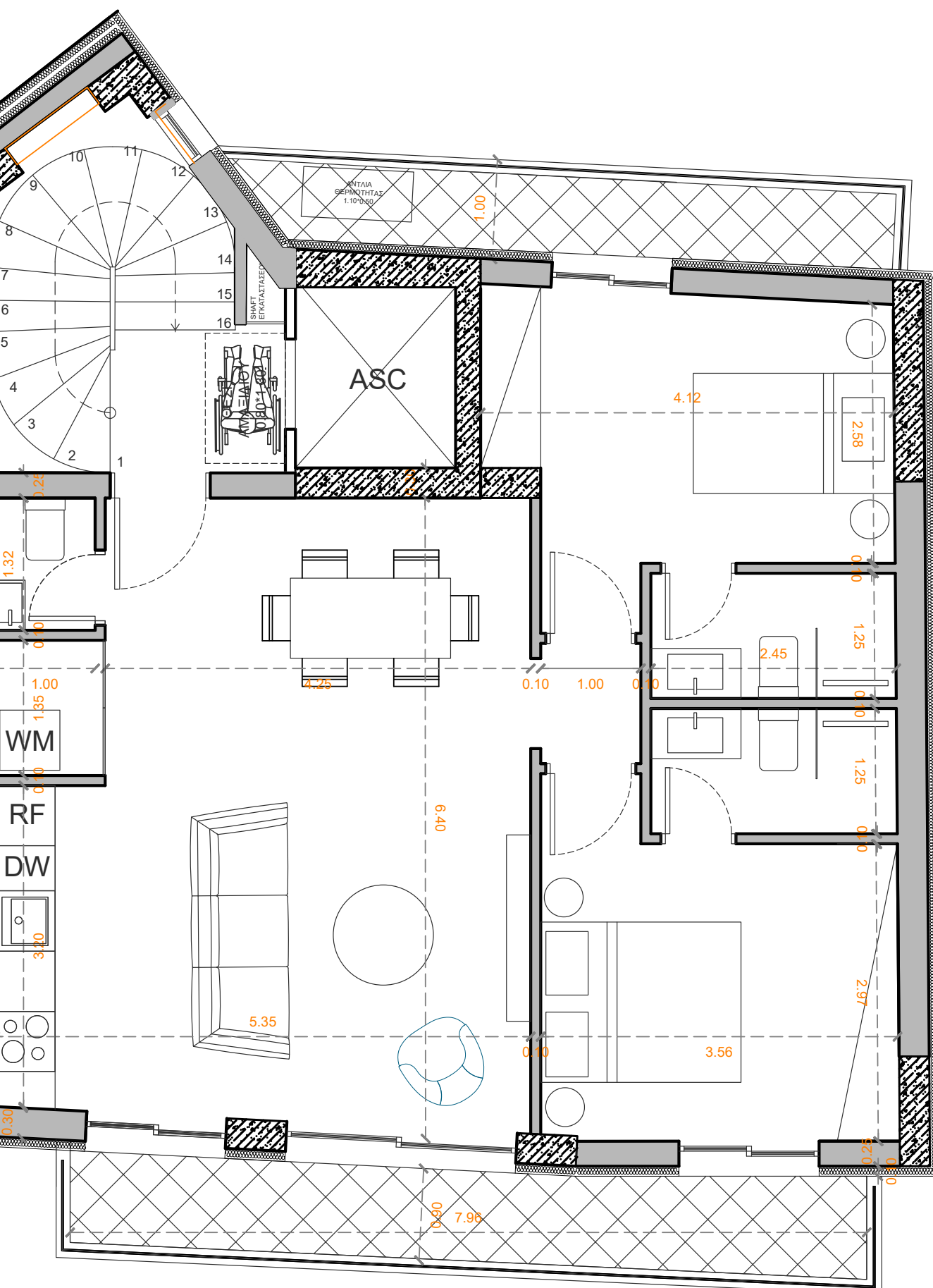
Every detail in Majestic Court has been thoughtfully considered to provide an excellent living environment that blends modern design with practical comfort.



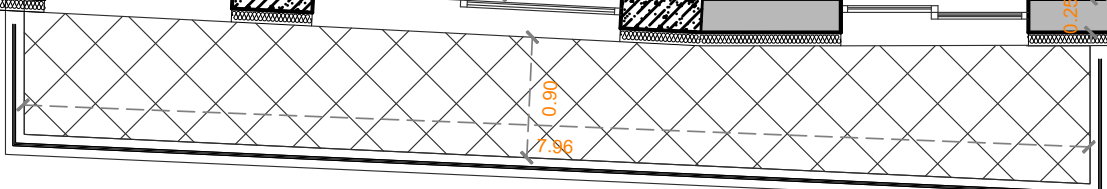
# Parking Level Plan





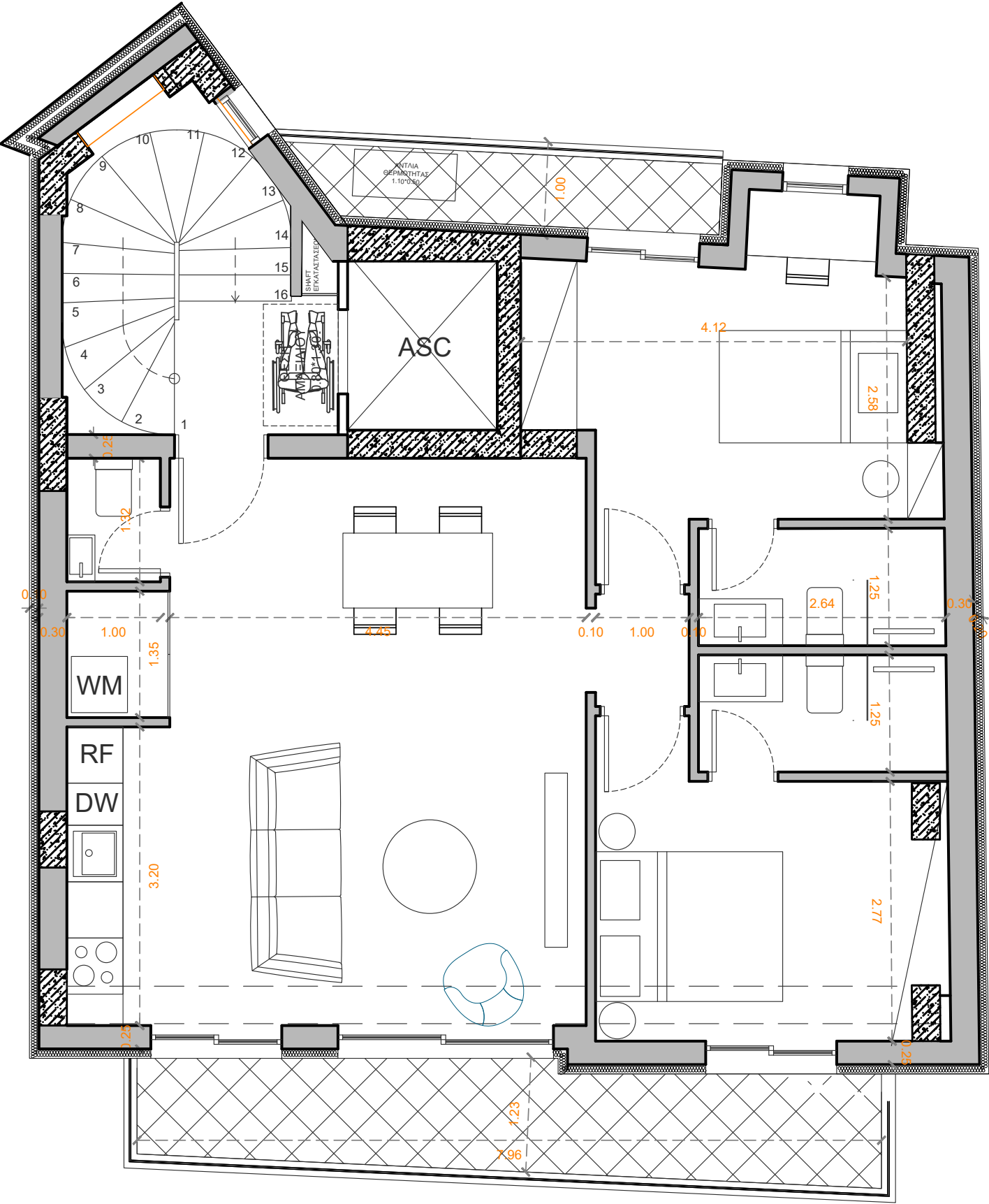








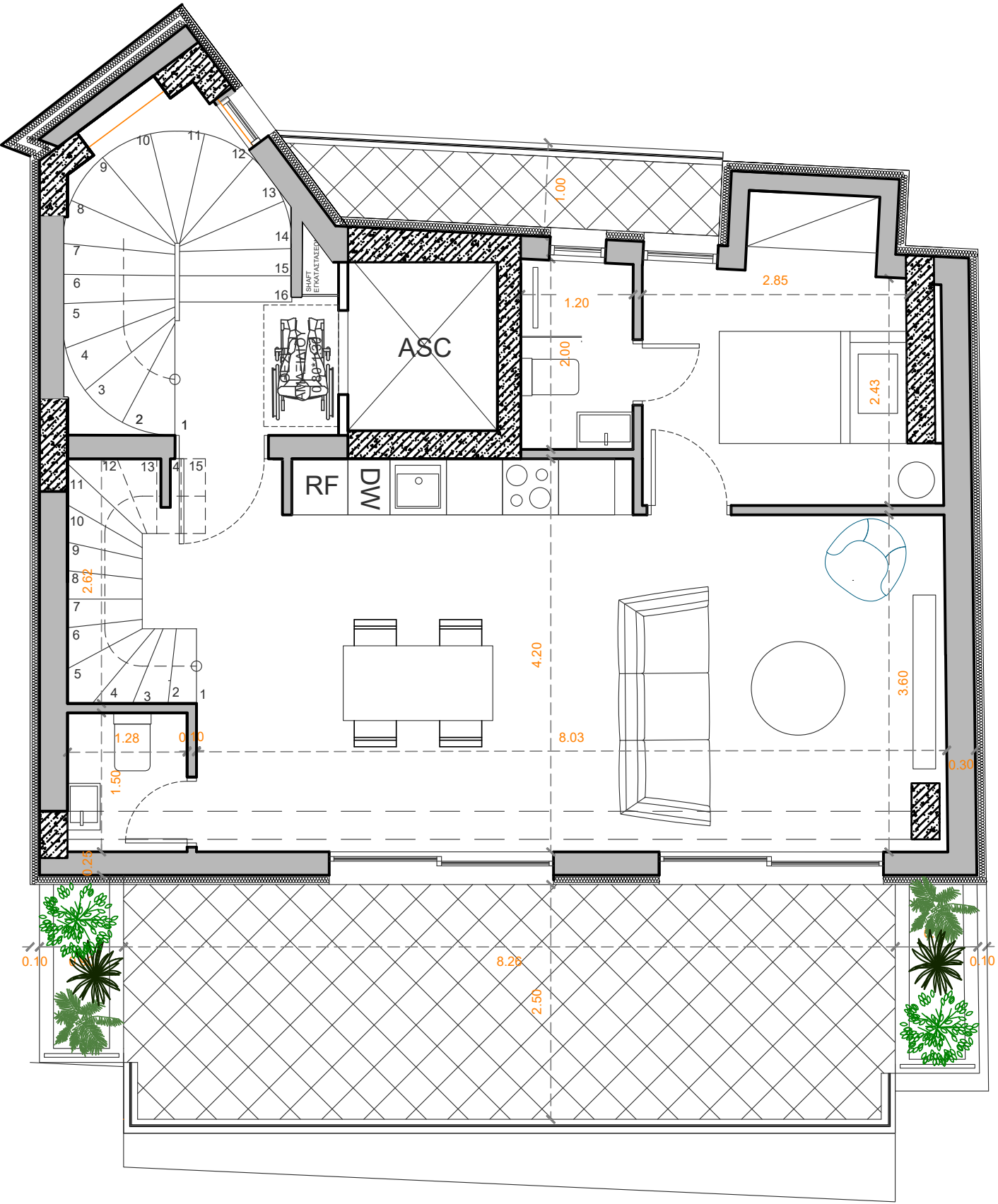
# 5<sup>th</sup> Floor Plan



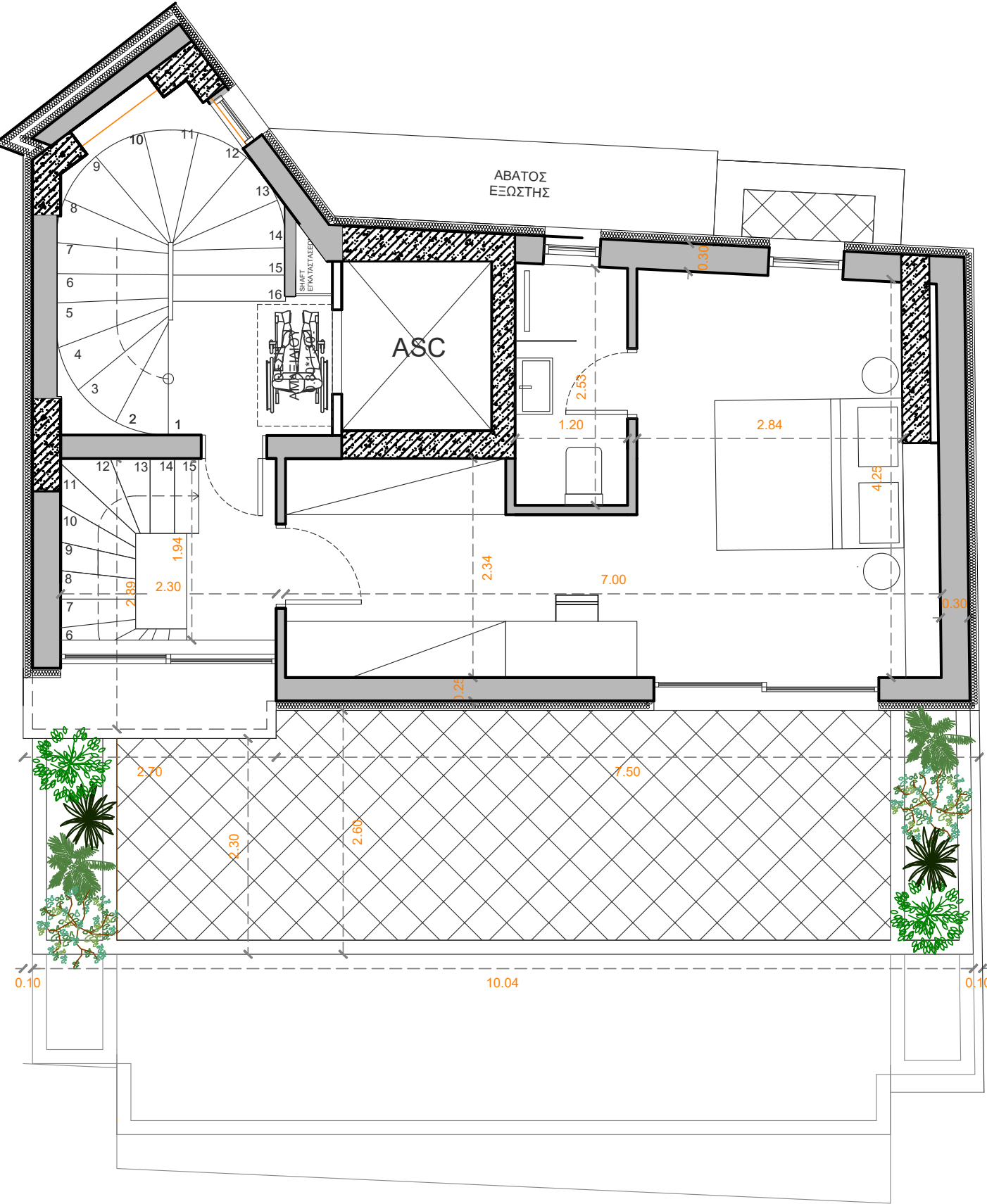


# Duplex Floor Plan – 6<sup>th</sup> & 7<sup>th</sup> Floors

## 6<sup>th</sup> Floor



7<sup>th</sup> Floor











**Greece Office - Athens**

6 Iraklitou, Office 2, Kolonaki, 106 73 Athens, Greece

Tel: +30 210 3614507 & +30 210 3628476

E-mail: [salesgreece@zavos.com](mailto:salesgreece@zavos.com)

**Cyprus Head office**

1 Grivas Dighenis Avenue, Zavos Kriel Court, 3035 Limassol, Cyprus

Tel: 00357 25 818555 | Fax: 00357 25 818550 | Email: [sales@zavos.com](mailto:sales@zavos.com) | [info@zavos.com](mailto:info@zavos.com)

[www.zavos.com](http://www.zavos.com)

---

The information in this brochure is indicative and is intended to act as a guide only, the finished product may vary from the information provided. These particulars should not be relied upon as statements of fact or representations and applicants must satisfy themselves by inspection or otherwise as to their correctness. This information does not constitute a contract or warranty. The dimensions given on plans are subject to minor variations and are not intended to be used for carpet sizes, appliance sizes or items of furniture. Majestic Court - Piraeus is a marketing name and will not necessarily form part of the approved postal address. Computer generated images are indicative only.