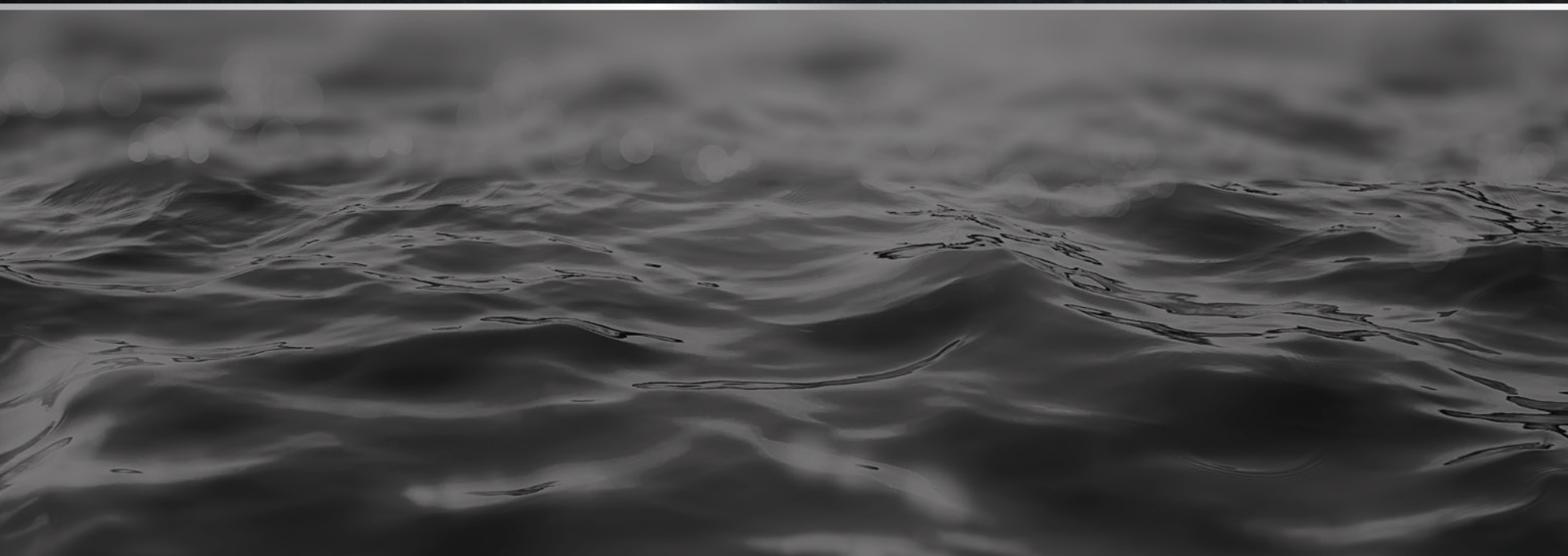


THE ADDRESS
BY THE SEA ■ LIMASSOL



An Oasis
of Refined Luxury



Sky-high views of the Limassol seafront

Seemingly emerging from the pristine waters of the Limassol seafront, The Address By The Sea is an eye-catching high-rise that offers sweeping views of the coast and sprawling cityscape.

The 11-floor reinforced concrete structure, clad in glass and marble, features spacious, modern two and three-bedroom residences, including two three-bedroom penthouses, all with uninterrupted sea views. The building's front entrance opens out to the azure coast of one of Limassol's many Blue Flag beaches, whilst the neighboring area is host to Limassol's buzzing shopping and business hub.

High-end shops, cafés, fine dining establishments and luxury hotels, as well as local schools, banks and other businesses, are all located within the vicinity, allowing residents to enjoy the exclusivity of beachfront living with the convenience of having all necessities within reach.



Indulge in Luxury Beachfront Living

The 11 floors of The Address By The Sea hold a total of 28 apartments of varying sizes, all carefully arranged to ensure generous proportions and utmost privacy. The top floor boasts two three-bedroom penthouses, with their own private pools and lushly landscaped roof gardens. Each apartment promises uninterrupted views of the coastline, thanks to the deep balconies that provide ample space for residents to create their own beachside oasis.

The two- and three-bedroom apartments include en-suite master bedrooms, guest washrooms, covered parking area, and basement storage space, while penthouse apartments also feature Jacuzzi bathtubs. Bedroom walls are covered with branded wallpaper, and boast Roberto Cavalli Luxury Home tiles and Italian wardrobes. All apartments are fully equipped with automatic lighting, and the living areas, corridors and bathrooms are fitted with marble Monograph Design floor tiles, with solid wood parquet in the bedrooms.

Weather fluctuations will not be a concern for residents, as every apartment is equipped with underfloor heating and VRV Systems / Air Conditioning. In addition, kitchens are outfitted with electrical appliances by Miele and granite covered counter tops.



Uninterrupted
views of the coastline





Delight in Exclusivity

Residents of The Address By The Sea can enjoy a wealth of amenities synonymous with luxury living. Whether relaxing and unwinding at the communal swimming pool and sundeck, or working up a sweat at the state-of-the-art gym, sauna and tennis courts, you can rest easy with the knowledge that secure, controlled access adds an extra layer of safety and security to the premises.

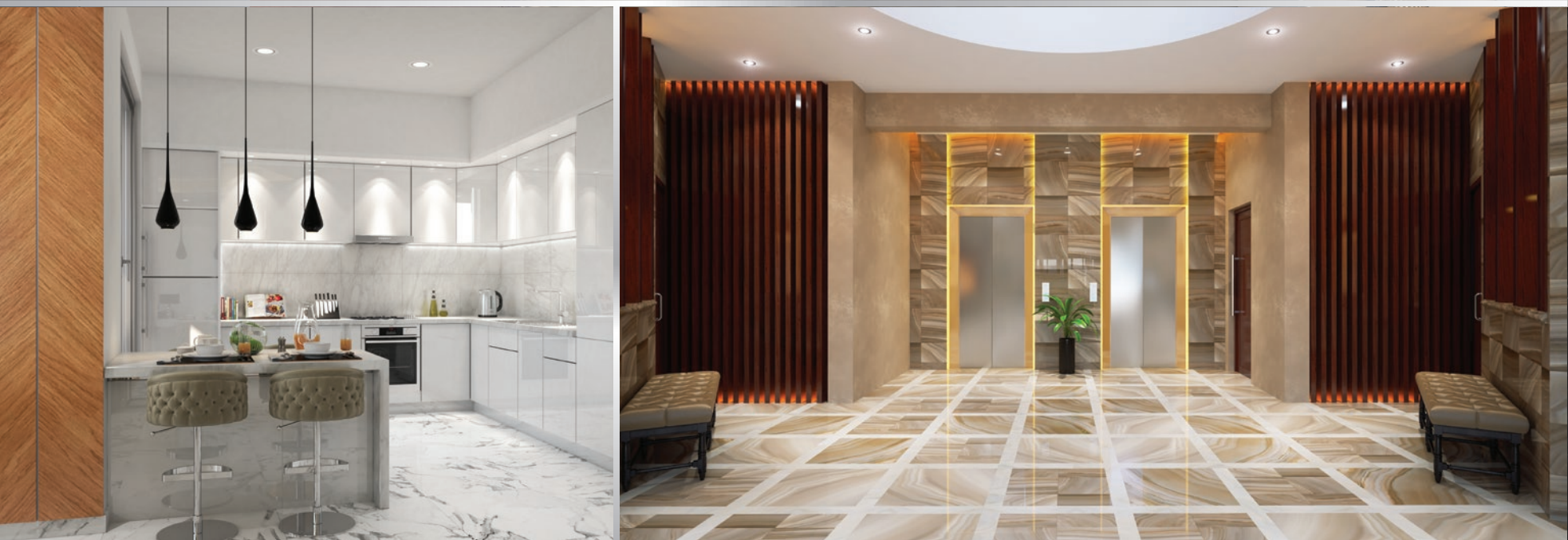


An Oasis of Refined Luxury

Upon entering the building, residents are greeted by an impressive lobby area. The marble tiles that adorn the floors and walls gleam, while precise lighting illuminates the entire area as well as the two elevators that whisk residents up to their respective floors.

Every apartment is carefully constructed and fitted with high-quality materials that are designed with aesthetic functionality and with residents' comfort and convenience in mind. Marble floors gleam, and comfortable open plan living areas extend into Italian-style kitchens with granite countertops and plenty of space to satisfy even the most demanding of chefs.

Large floor-to-ceiling windows offer up a steady view of the Limassol coastline, and open up onto generous balconies where one can enjoy the refreshing sea breeze.





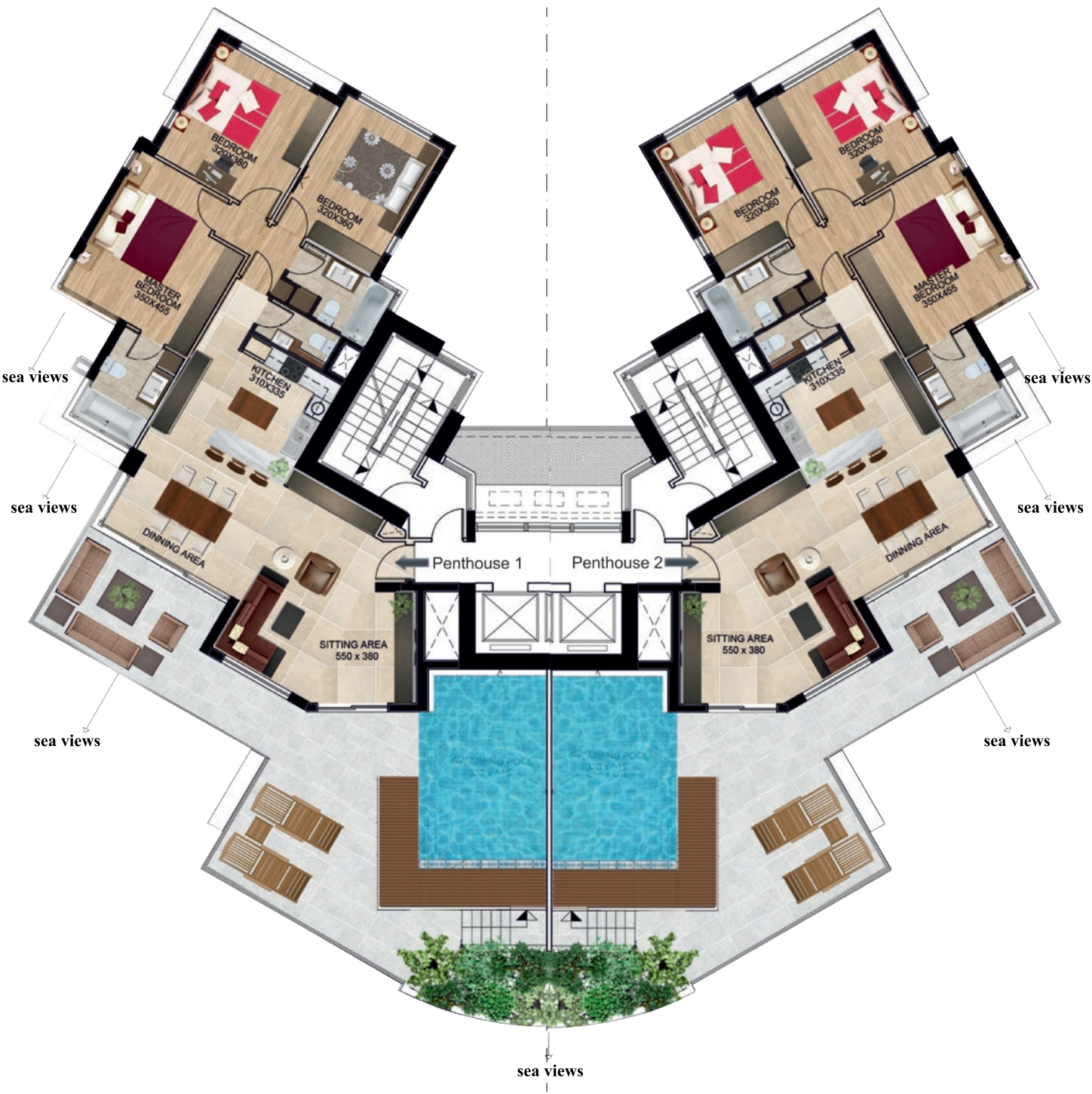
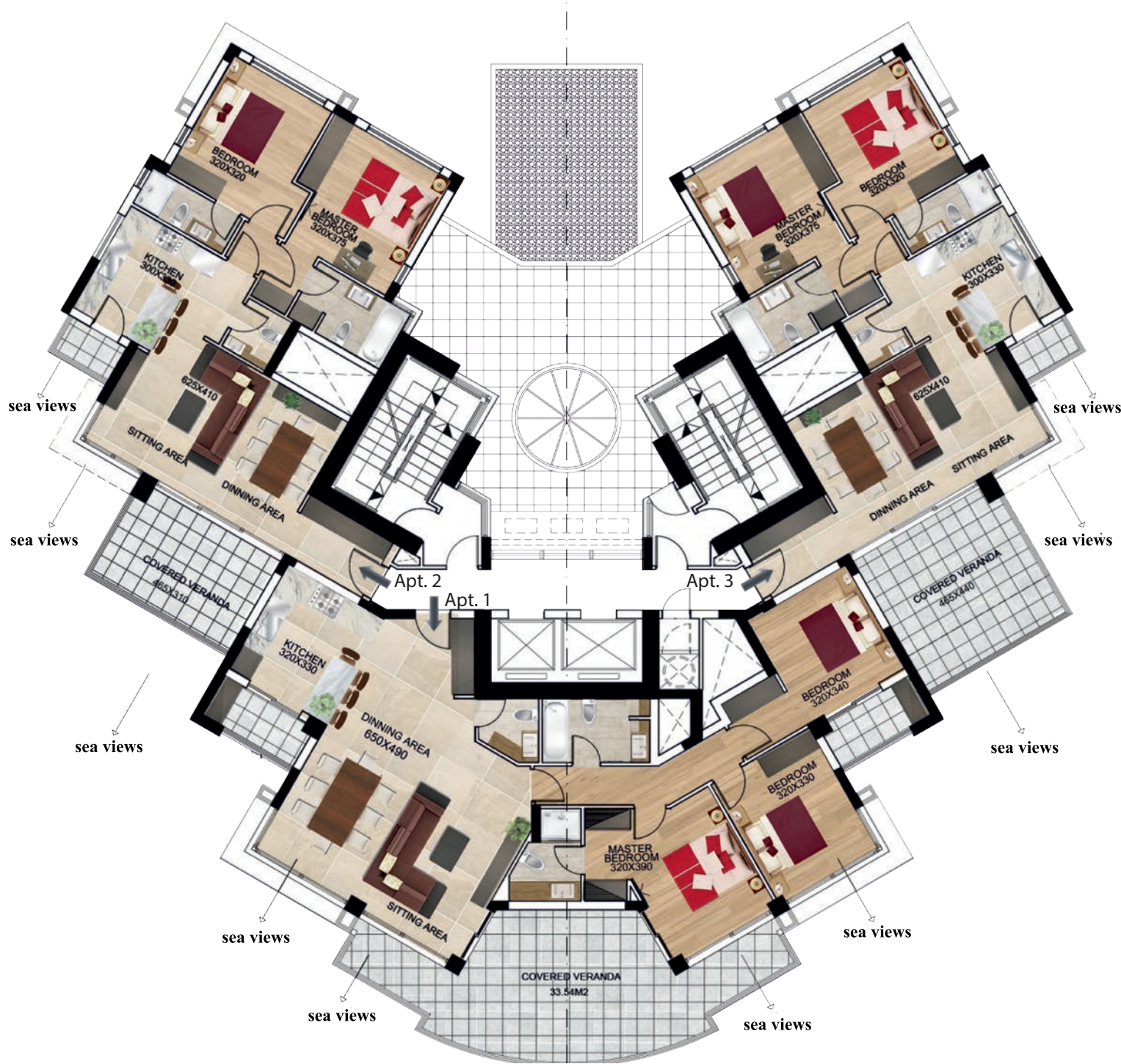


Exclusivity
of beachfront living



Typical
Floor (1-9)

Penthouse
Floor





Indulge in Luxury

Beachfront Living



1 Grivas Dighenis Avenue, Zavos Kriel Court, 3035 Limassol, Cyprus
 Tel: 00357 25 818555 | Fax: 00357 25 818550 | Email: sales@zavos.com info@zavos.com
www.zavos.com

The information in this brochure is indicative and is intended to act as a guide only, the finished product may vary from the information provided. These particulars should not be relied upon as statements of fact or representations and applicants must satisfy themselves by inspection or otherwise as to their correctness. This information does not constitute a contract or warranty. The dimensions given on plans are subject to minor variations and are not intended to be used for carpet sizes, appliance sizes or items of furniture. The Address By The Sea is a marketing name and will not necessarily form part of the approved postal address. Computer generated images are indicative only.