



L I M A S  
TOWER

Corporate Elegance

# Luxury

# In Corporate

**LIMAS Tower** holds a unique and contemporary façade with a touch of architectural grandeur. Covered in floor-to-ceiling glass windows, broken up by wooden planks that add dimension and a sense of elegance to the building's façade. Interiors are decorated with modern cuts of marble flooring and wall coverings, elevating the office spaces to a new level.

---

## Ground Floor + Mezzanine

234m<sup>2</sup>

## 1st Floor

Covered Area 277m<sup>2</sup>

+ Covered Veranda 90m<sup>2</sup>

## 2nd, 3rd + 4th Floors

Covered Area 284m<sup>2</sup>

+ Covered Veranda 72m<sup>2</sup>

## Roof

16m<sup>2</sup>

## Floor Specs

### Total Area

1.805m<sup>2</sup>

### Covered Area

Ground Floor

+ Mezzanine + 4 Floors

1.363m<sup>2</sup>

### Covered Veranda

305m<sup>2</sup>

### Lobby

121m<sup>2</sup>

### Basement

678m<sup>2</sup>

### Covered Parking area

33 spaces









# Unique Office Spaces

LIMAS Tower is a corporate office tower, ideally located in the central Kolonakiou avenue, in Limassol. The tower boasts a quick access to the highway, is just a minute drive from the sea, and just a few minutes more for the historic centre. Surrounded by shops, bakeries, restaurants, and other offices, the area is completely ideal for brand new corporate office spaces in a booming area that is already on the rise.









# All Your Office Needs, Provided.

The project consists of a ground floor office with a mezzanine 234m<sup>2</sup> and a fully serviced lobby area. Each of the 4 floors includes an almost identical floor plan with a reception area and 4 floors office spaces each. Each floor is 284m<sup>2</sup> and comes with a decent amount of space for each office, an archive room, and all amenities an office could need. The tower also offers a balcony area for each floor and 33 parking spaces for employees and office holders.





# Unique and Contemporary

LIMAS Tower holds a unique and contemporary façade with a touch of architectural grandeur. Covered in floor-to-ceiling glass windows, broken up by wooden planks that add dimension and a sense of elegance to the building's façade. Interiors are decorated with modern cuts of marble flooring and wall coverings, elevating the office spaces to a new level.



THE OVAL



LIMAS  
TOWER



**TRILOGY**

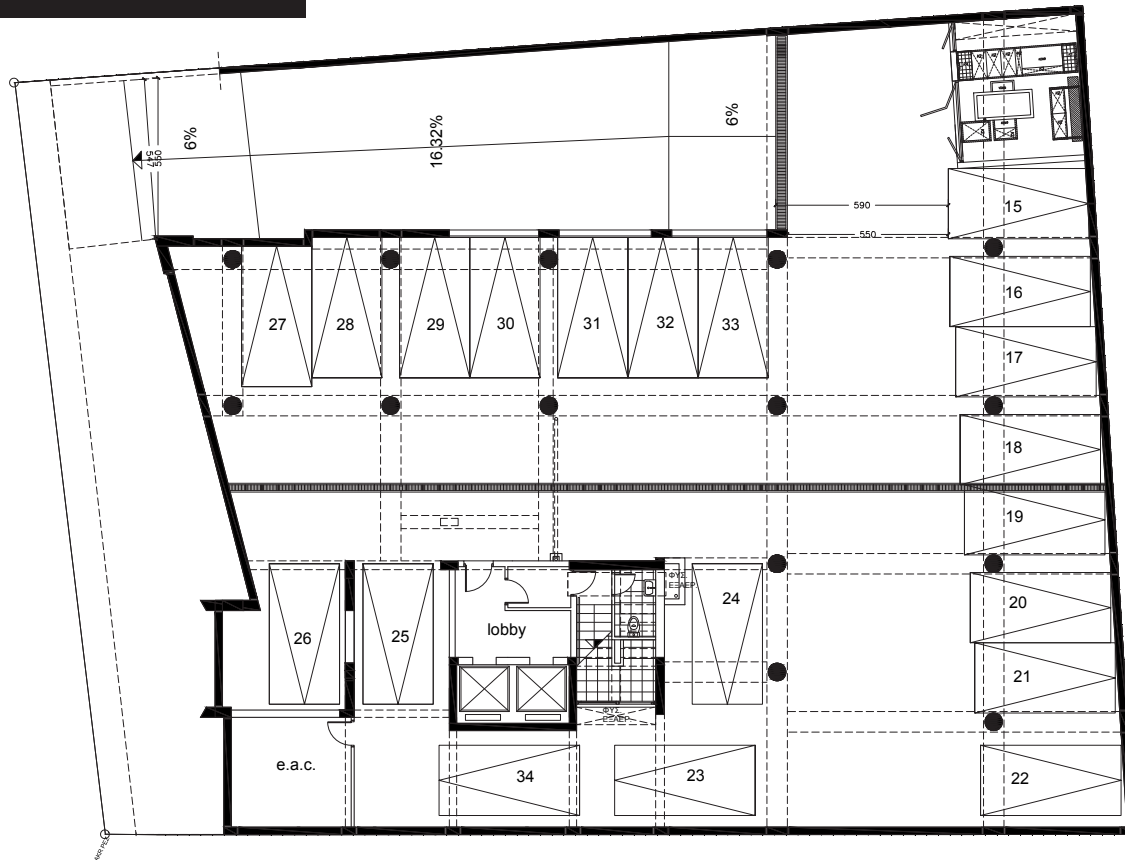
**GROSVENOR  
TOWER**

**BANK OF  
CYPRUS**

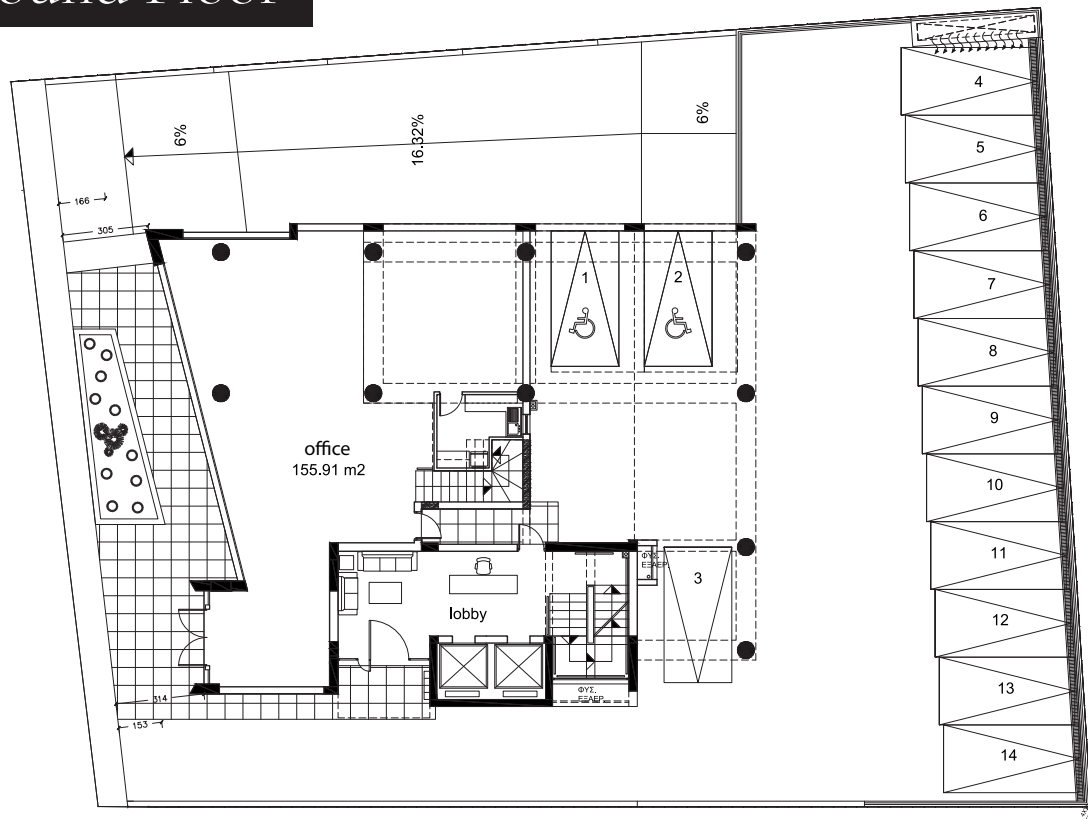




# Basement

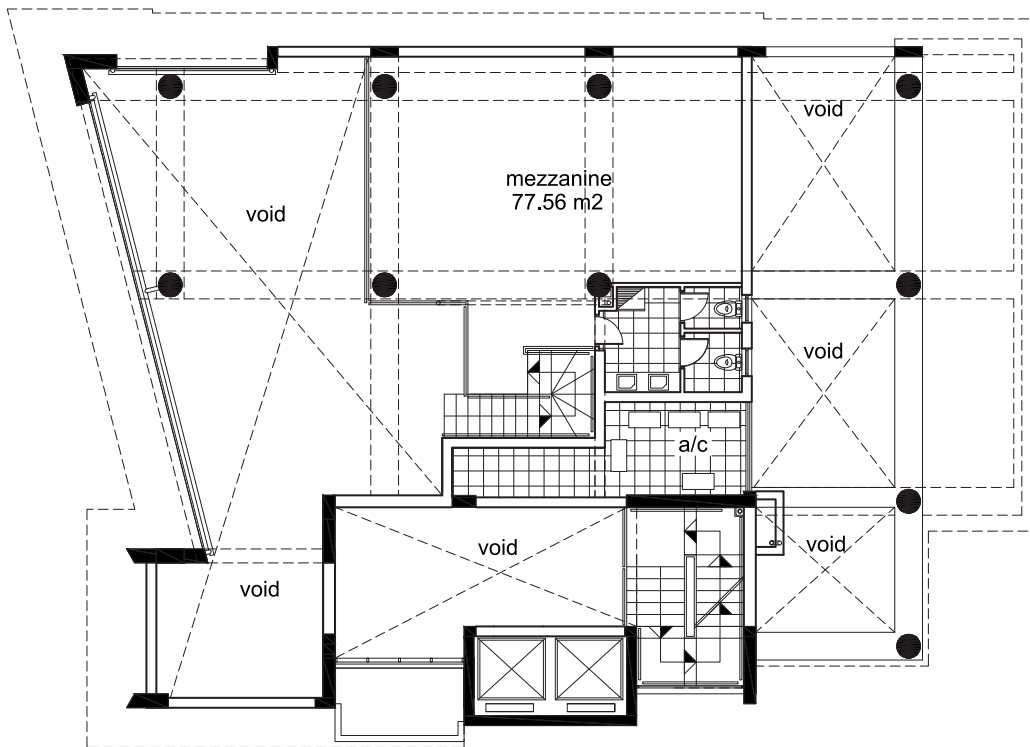


# Ground Floor

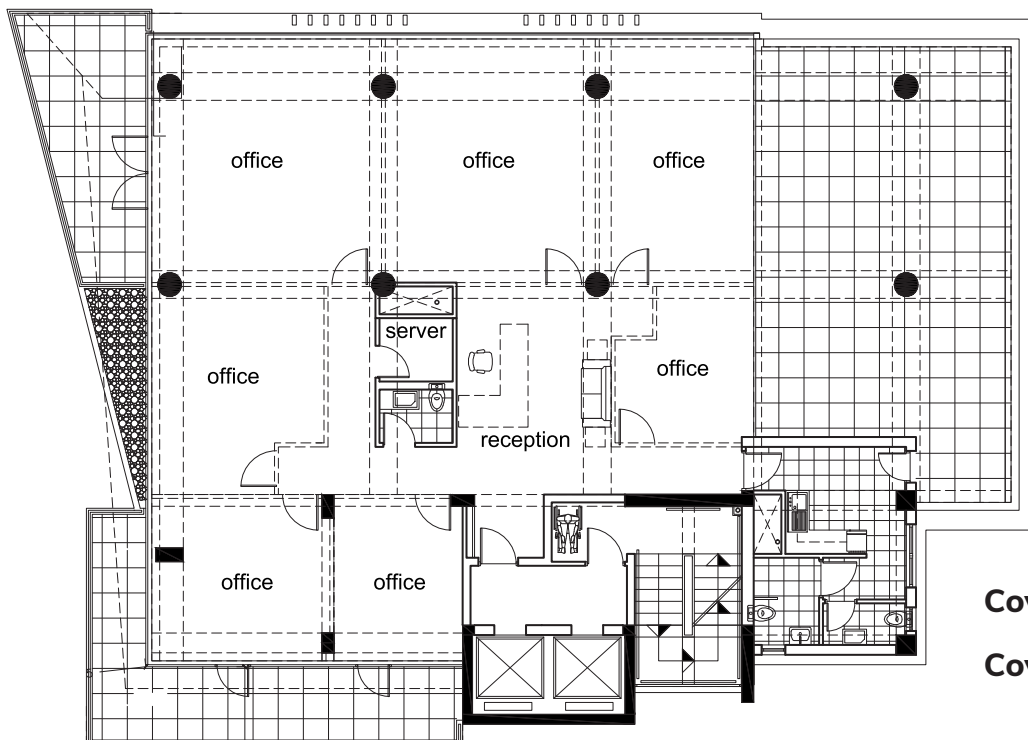




## Mezzanine Floor



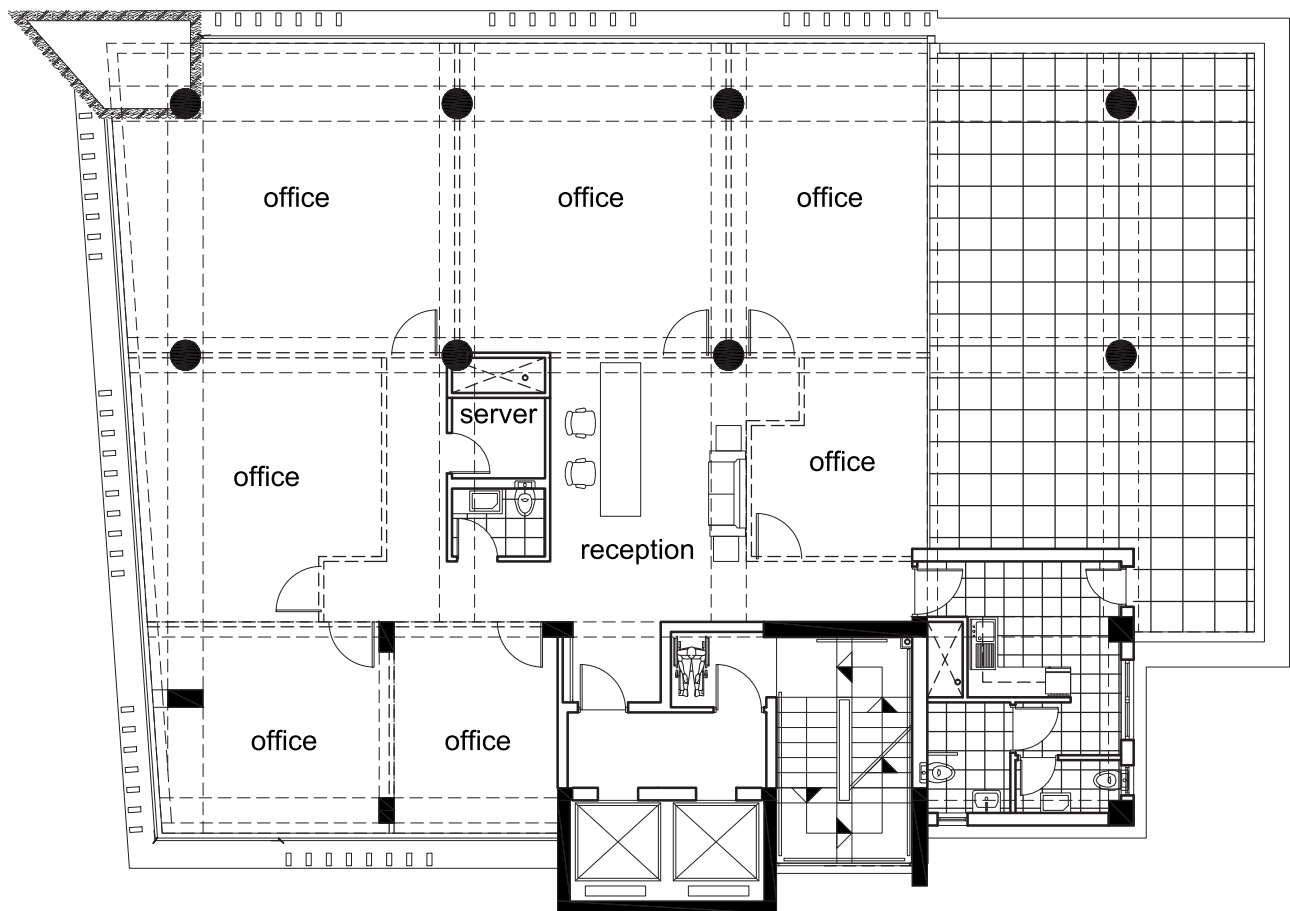
## 1<sup>st</sup> Floor



**Covered Area 277m2**

**Covered Veranda 90m2**

## 2<sup>nd</sup> / 3<sup>rd</sup> / 4<sup>th</sup> Floors



**Covered Area** 284m<sup>2</sup>

**Covered Veranda** 72m<sup>2</sup>





LIMAS  
Tower



1 Grivas Dighenis Avenue, Zavos Kriel Court, 3035 Limassol, Cyprus  
Tel: 00357 25 818555 | Fax: 00357 25 818550 | Email: [sales@zavos.com](mailto:sales@zavos.com) [info@zavos.com](mailto:info@zavos.com)  
[www.zavos.com](http://www.zavos.com)

---

The information in this brochure is indicative and is intended to act as a guide only, the finished product may vary from the information provided. These particulars should not be relied upon as statements of fact or representations and applicants must satisfy themselves by inspection or otherwise as to their correctness. This information does not constitute a contract or warranty. The dimensions given on plans are subject to minor variations and are not intended to be used for carpet sizes, appliance sizes or items of furniture. LIMAS Tower is a marketing name and will not necessarily form part of the approved postal address. Computer generated images are indicative only.